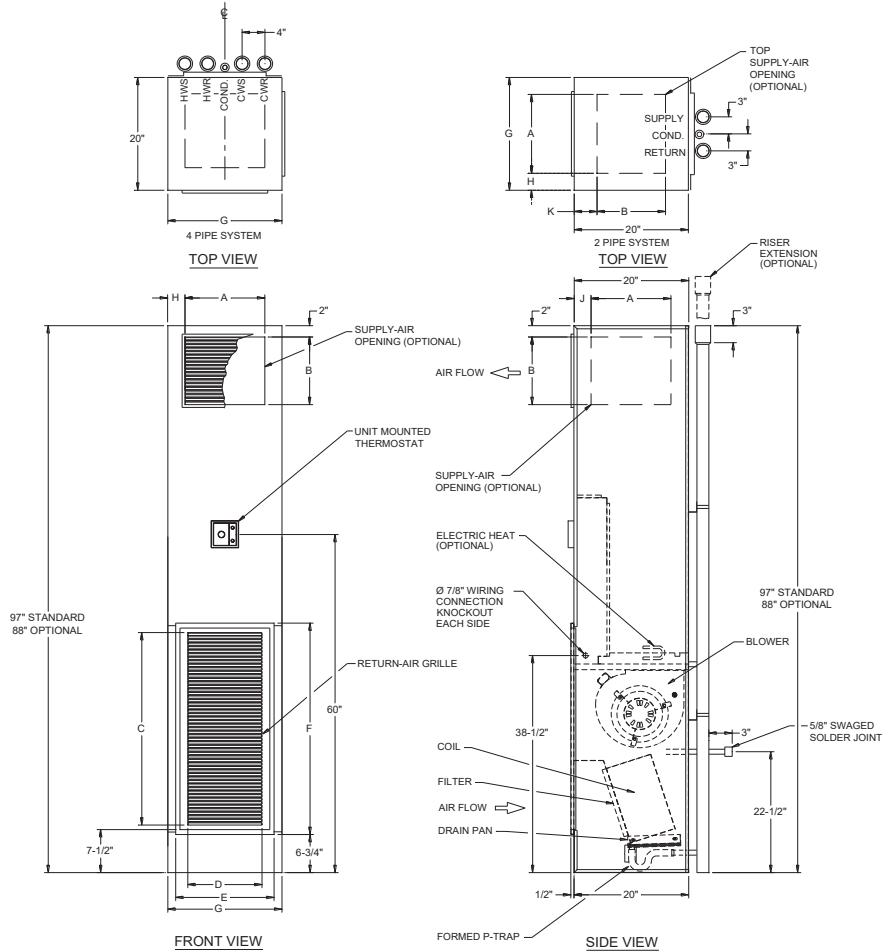


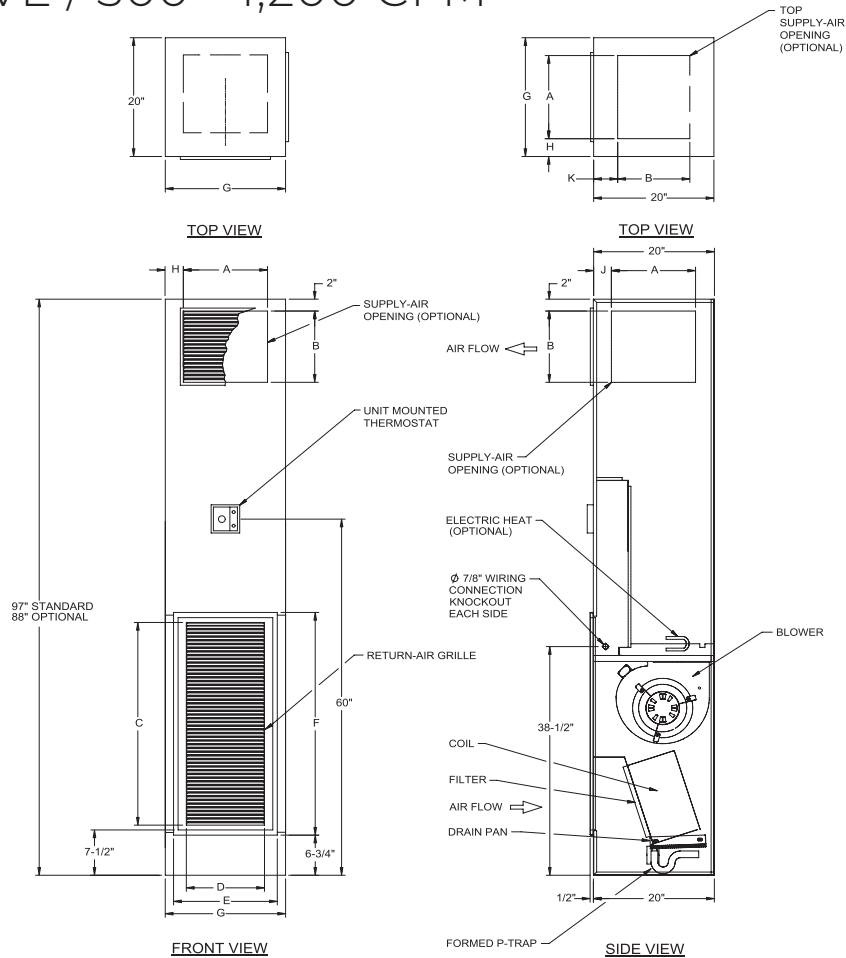
VERTICAL STACK HIGH RISE DR-M MASTER SLAVE / 300 - 1,200 CFM



MODEL DR-M	DISCHARGE OPENING		RETURN AIR GRILLE		ACCESS PANEL		G	H	J	K	FILTER SIZE
	A	B	C	D	E	F					
300	14	12	34	13	17-1/2	37-1/2	20	3	3	4	12 x 15-1/2 x 1
400	14	12	34	13	17-1/2	37-1/2	20	3	3	4	12 x 15-1/2 x 1
500	14	12	34	13	17-1/2	37-1/2	20	3	3	4	12 x 15-1/2 x 1
600	16	14	34	17	20-1/2	37-1/2	24	4	2	3	12 x 15-1/2 x 1
800	16	14	34	17	20-1/2	37-1/2	24	4	2	3	12 x 15-1/2 x 1
1000	16	14	40	17	20-1/2	43-1/2	24	4	2	3	18 x 19-1/2 x 1
1200	16	14	40	17	20-1/2	43-1/2	24	4	2	3	18 x 19-1/2 x 1

- Coil connections may be right, left or rear.
- Coil connections determined by facing the return air grille.
- Electrical junction box is located above the blower and motor assembly.
- Unit must be installed level and condensate drain lines should be trapped.
- Drain pan is powder coated epoxy with a 1/4" thick closed cell insulation and has a formed p-trap drain connection.
- Entire cabinet, scroll and blower wheel are heavy gauge, galvanized steel.
- Coil connections: 1/2" CW on DR003-006, 3/4" on DR008-012 and 1/2" HW DR003-012.

VERTICAL STACK HIGH RISE DR-S SLAVE / 300 - 1,200 CFM



MODEL DR-S	DISCHARGE OPENING		RETURN AIR GRILLE		ACCESS PANEL		G	H	J	K	FILTER SIZE
	A	B	C	D	E	F					
300	14	12	34	13	17-1/2	37-1/2	20	3	3	4	12 x 15-1/2 x 1
400	14	12	34	13	17-1/2	37-1/2	20	3	3	4	12 x 15-1/2 x 1
500	14	12	34	13	17-1/2	37-1/2	20	3	3	4	12 x 15-1/2 x 1
600	16	14	34	17	20-1/2	37-1/2	24	4	2	3	12 x 15-1/2 x 1
800	16	14	34	17	20-1/2	37-1/2	24	4	2	3	12 x 15-1/2 x 1
1000	16	14	40	17	20-1/2	43-1/2	24	4	2	3	18 x 19-1/2 x 1
1200	16	14	40	17	20-1/2	43-1/2	24	4	2	3	18 x 19-1/2 x 1

- Coil connections may be right, left or rear.
- Coil connections determined by facing the return air grille.
- Electrical junction box is located above the blower and motor assembly.
- Unit must be installed level and condensate drain lines should be trapped.
- Removable drain pan is powder coated epoxy with a 1/8" thick Elastomeric insulation and has 3/4" NPT primary and secondary drain connections.
- Entire cabinet, scroll and blower wheel are heavy gauge, galvanized steel.
- Coil Connections: 1/2" CW on DR003-006, 3/4" on DR008-012 and 1/2" HW on DR003-012