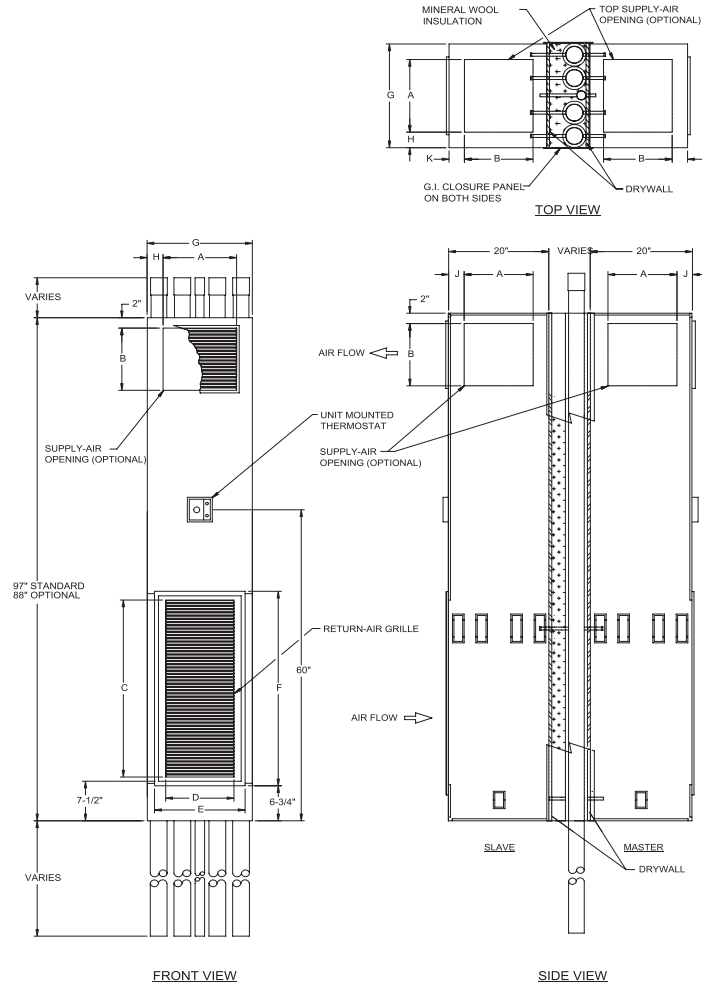


VERTICAL STACK

DR TWINPACK / 300 - 1,200 CFM / WITH RISERS BETWEEN UNITS

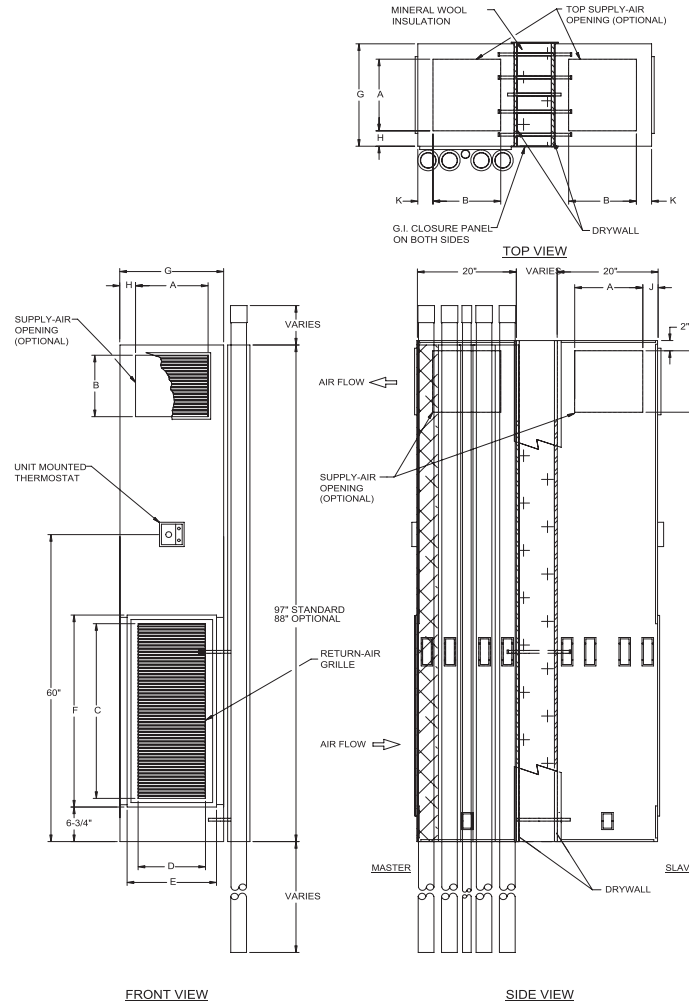


MODEL DR-B	DISCHARGE OPENING		RETURN AIR GRILLE		ACCESS PANEL		G	H	J	K	FILTER SIZE
	A	B	C	D	E	F					
300	14	12	34	13	17-1/2	37-1/2	20	3	3	4	12 x 15-1/2 x 1
400	14	12	34	13	17-1/2	37-1/2	20	3	3	4	12 x 15-1/2 x 1
500	14	12	34	13	17-1/2	37-1/2	20	3	3	4	12 x 15-1/2 x 1
600	16	14	34	17	20-1/2	37-1/2	24	4	2	3	12 x 15-1/2 x 1
800	16	14	34	17	20-1/2	37-1/2	24	4	2	3	12 x 15-1/2 x 1
1000	16	14	40	17	20-1/2	43-1/2	24	4	2	3	18 x 19-1/2 x 1
1200	16	14	40	17	20-1/2	43-1/2	24	4	2	3	18 x 19-1/2 x 1

- TwinPacks include a one hour UL through penetration firestop W-L-7089 system. Local codes may dictate exact amount and placement of drywall.
- Galvanized steel support brackets are added to the top and bottom of each TwinPack for protection during shipping and handling.
- Field furnish and install approved firestop material after the units are installed at points where piping penetrates the ceiling and floor.
- Each unit operates independently with it's own valves and controls.
- The TwinPack unit is suitable for zero inch clearance to combustible materials.

VERTICAL STACK

DR TWINPACK / 300 - 1,200 CFM / WITH RIGHT SIDE RISERS



FRONT VIEW

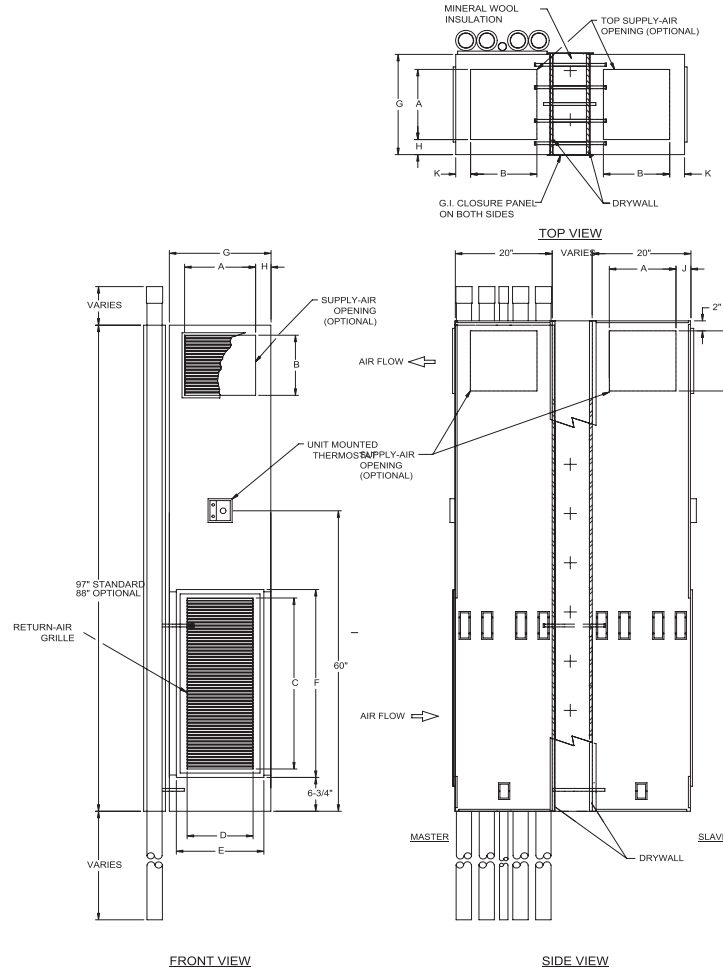
SIDE VIEW

MODEL DR-B	DISCHARGE OPENING		RETURN AIR GRILLE		ACCESS PANEL		G	H	J	K	FILTER SIZE
	A	B	C	D	E	F					
300	14	12	34	13	17-1/2	37-1/2	20	3	3	4	12 x 15-1/2 x 1
400	14	12	34	13	17-1/2	37-1/2	20	3	3	4	12 x 15-1/2 x 1
500	14	12	34	13	17-1/2	37-1/2	20	3	3	4	12 x 15-1/2 x 1
600	16	14	34	17	20-1/2	37-1/2	24	4	2	3	12 x 15-1/2 x 1
800	16	14	34	17	20-1/2	37-1/2	24	4	2	3	12 x 15-1/2 x 1
1000	16	14	40	17	20-1/2	43-1/2	24	4	2	3	18 x 19-1/2 x 1
1200	16	14	40	17	20-1/2	43-1/2	24	4	2	3	18 x 19-1/2 x 1

- TwinPacks include a one hour UL through penetration firestop W-L-7089 system. Local codes may dictate exact amount and placement of drywall.
- Galvanized steel support brackets are added to the top and bottom of each TwinPack for protection during shipping and handling.
- Field furnish and install approved firestop material after the units are installed at points where piping penetrates the ceiling and floor.
- Each unit operates independently with it's own valves and controls.
- The TwinPack unit is suitable for zero inch clearance to combustible materials.

VERTICAL STACK

DR TWINPACK / 300 - 1,200 CFM / WITH LEFT SIDE RISERS



MODEL DR-B	DISCHARGE OPENING		RETURN AIR GRILLE		ACCESS PANEL		G	H	J	K	FILTER SIZE
	A	B	C	D	E	F					
300	14	12	34	13	17-1/2	37-1/2	20	3	3	4	12 x 15-1/2 x 1
400	14	12	34	13	17-1/2	37-1/2	20	3	3	4	12 x 15-1/2 x 1
500	14	12	34	13	17-1/2	37-1/2	20	3	3	4	12 x 15-1/2 x 1
600	16	14	34	17	20-1/2	37-1/2	24	4	2	3	12 x 15-1/2 x 1
800	16	14	34	17	20-1/2	37-1/2	24	4	2	3	12 x 15-1/2 x 1
1000	16	14	40	17	20-1/2	43-1/2	24	4	2	3	18 x 19-1/2 x 1
1200	16	14	40	17	20-1/2	43-1/2	24	4	2	3	18 x 19-1/2 x 1

- TwinPacks include a one hour UL through penetration firestop W-L-7089 system. Local codes may dictate exact amount and placement of drywall.
- Galvanized steel support brackets are added to the top and bottom of each TwinPack for protection during shipping and handling.
- Field furnish and install approved firestop material after the units are installed at points where piping penetrates the ceiling and floor.
- Each unit operates independently with it's own valves and controls.
- The TwinPack unit is suitable for zero inch clearance to combustible materials.