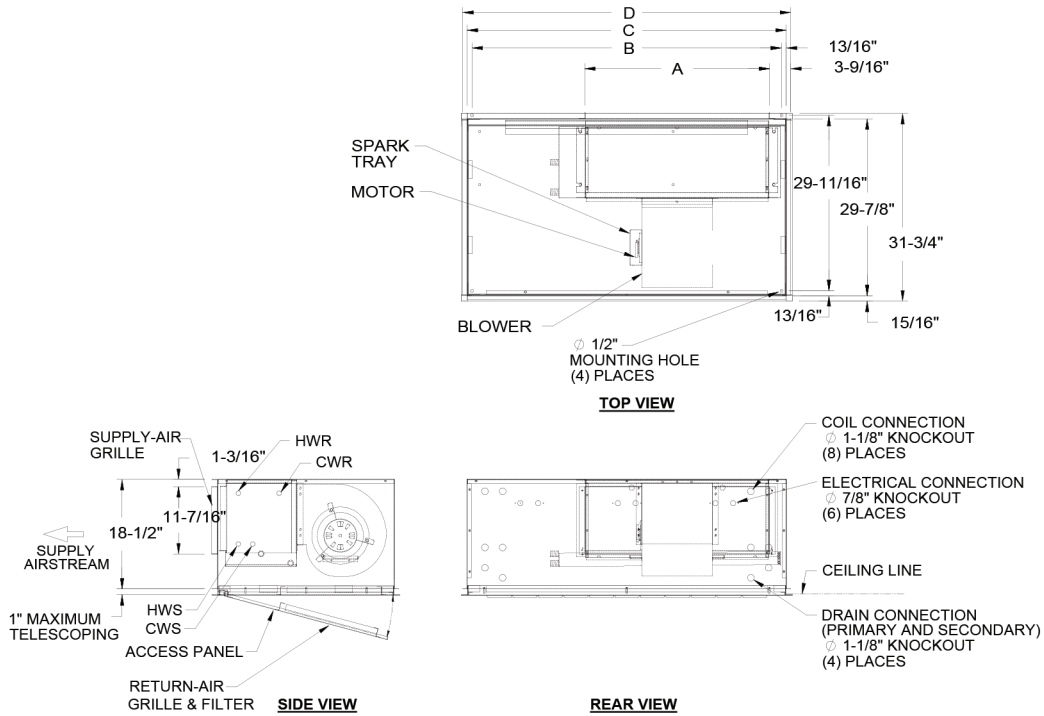


# HIGH PERFORMANCE HORIZONTAL FLUSH

HH-F / 600 - 1,200 CFM

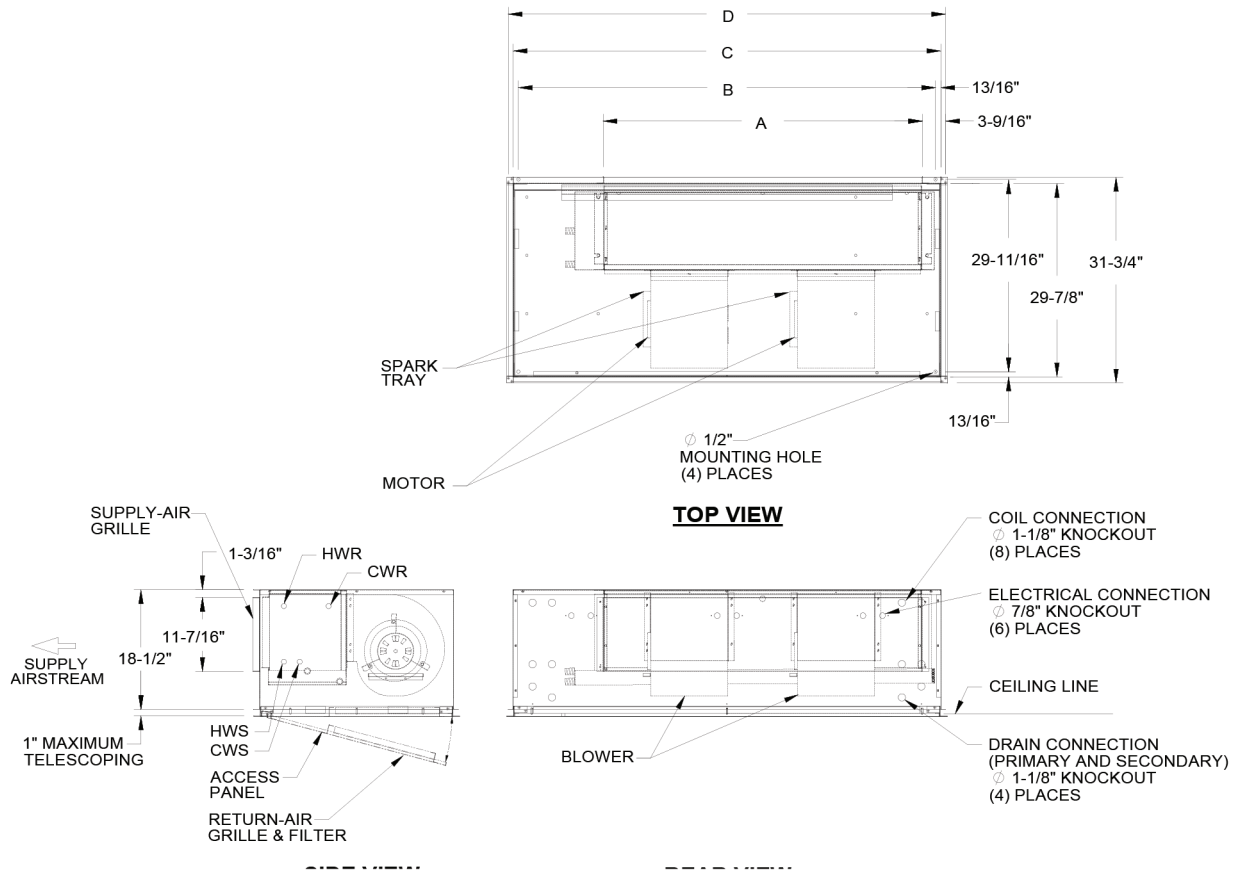


| MODEL FLUSH | A       | B      | C  | D      | FILTER SIZE     |
|-------------|---------|--------|----|--------|-----------------|
| 600         | 15-5/16 | 44-3/8 | 46 | 47-1/2 | (2) 12 X 20 X 1 |
| 800         | 19-5/16 | 44-3/8 | 46 | 47-1/2 | (2) 12 X 20 X 1 |
| 1000        | 25-5/16 | 44-3/8 | 46 | 47-1/2 | (2) 12 X 20 X 1 |
| 1200        | 31-5/16 | 52-3/8 | 54 | 55-1/2 | (2) 12 X 25 X 1 |

- All sizes shown in inches.
- Right hand unit shown, left hand unit opposite.
- Coil connections determined by facing the supply air opening.
- Electrical junction box is located on the same side as the coil connections.
- Unit must be installed level and condensate drain lines should be trapped.
- Drain pan is powder coated epoxy with a 1/8" thick closed cell insulation and has 3/4" NPT primary and secondary drain connections.
- Entire cabinet, scroll and blower wheel are heavy gauge, galvanized steel.
- Coil connections: 1/2" CW on HH006, 3/4" on HH008-012 and 1/2" HW on HH006-012.

# HIGH PERFORMANCE HORIZONTAL FLUSH

HH-F / 1,500 - 2,200 CFM



| MODEL FLUSH | A       | B      | C  | D      | FILTER SIZE     |
|-------------|---------|--------|----|--------|-----------------|
| 1500        | 37-5/16 | 54-3/8 | 56 | 57-1/2 | (2) 12 X 25 X 1 |
| 1800        | 43-5/16 | 58-3/8 | 60 | 61-1/2 | (3) 12 X 20 X 1 |
| 2200        | 49-5/16 | 64-3/8 | 66 | 67-1/2 | (3) 12 X 20 X 1 |

- All sizes shown in inches.
- Right hand unit shown, left hand unit opposite.
- Coil connections determined by facing the supply air opening.
- Electrical junction box is located on the same side as the coil connections.
- Unit must be installed level and condensate drain lines should be trapped.
- Drain pan is powder coated epoxy with a 1/8" thick closed cell insulation and has 3/4" NPT primary and secondary drain connections.
- Entire cabinet, scroll and blower wheel are heavy gauge, galvanized steel.
- Coil connections: 3/4" CW on HH015-022 and 1/2" HW on HH015-022.