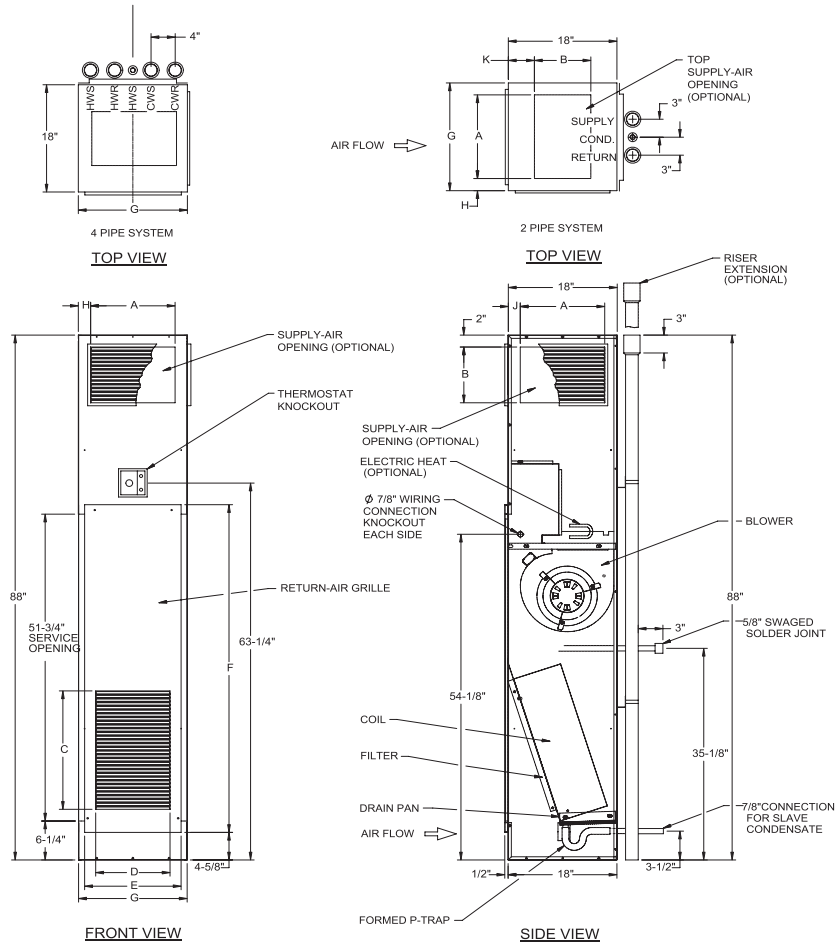


VERTICAL STACK HIGH RISE

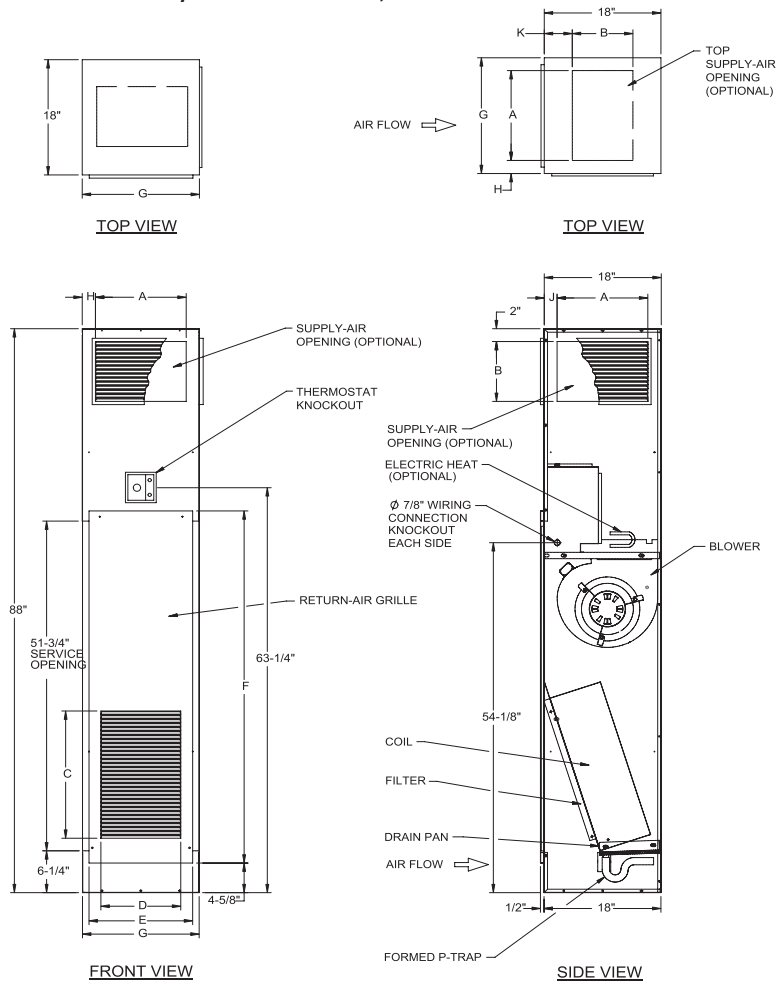
ER-M MAIN / 300 - 1,200 CFM



MODEL ER-M	DISCHARGE OPENING		RETURN AIR LOUVERS		RETURN AIR GRILLE		G	H	J	K	FILTER SIZE
	A	B	C	D	E	F					
300	14	12	19-1/2	13	17	55	18	2	2	2	14 x 25 x 1
400	14	12	19-1/2	13	17	55	18	2	2	2	14 x 25 x 1
600	14	12	19-1/2	13	17	55	18	2	2	2	14 x 25 x 1
800	16	14	20-1/2	15	23	55	24	4	1	4	20 x 25 x 1
1000	16	14	20-1/2	15	23	55	24	4	1	4	20 x 25 x 1
1200	16	14	20-1/2	15	23	55	24	4	1	4	20 x 25 x 1

- Coil connections may be right, left or rear.
- Coil connections determined by facing the return air grille.
- Electrical junction box is located above the blower and motor assembly.
- Unit must be installed level and condensate drain lines should be trapped.
- Removable drain pan is powder coated epoxy with a 1/8" thick Elastomeric insulation and has 3/4" NPT primary and secondary drain connections.
- Entire cabinet, scroll and blower wheel are heavy gauge, galvanized steel.
- Coil Connections: 1/2" CW on ERO03-006 and 3/4" on ERO03-012.

VERTICAL STACK HIGH RISE ER-S SECONDARY / 300 - 1,200 CFM



MODEL ER-S	DISCHARGE GRILLE		RETURN AIR OPENING		RETURN AIR GRILLE		G	H	J	K	FILTER SIZE
	A	B	C	D	E	F					
300	14	12	19-1/2	13	17	55	18	2	2	2	14 x 25 x 1
400	14	12	19-1/2	13	17	55	18	2	2	2	14 x 25 x 1
600	14	12	19-1/2	13	17	55	18	2	2	2	14 x 25 x 1
800	16	14	20-1/2	15	23	55	24	4	1	4	20 x 25 x 1
1000	16	14	20-1/2	15	23	55	24	4	1	4	20 x 25 x 1
1200	16	14	20-1/2	15	23	55	24	4	1	4	20 x 25 x 1

- Coil connections may be right, left or rear.
- Coil connections determined by facing the return air grille.
- Electrical junction box is located above the blower and motor assembly.
- Unit must be installed level and condensate drain lines should be trapped.
- Removable drain pan is powder coated epoxy with a 1/8" thick Elastomeric insulation and has 3/4" NPT primary and secondary drain connections.
- Entire cabinet, scroll and blower wheel are heavy gauge, galvanized steel.
- Coil Connections: 1/2" CW on ER003-006, 3/4" on ER008-012.