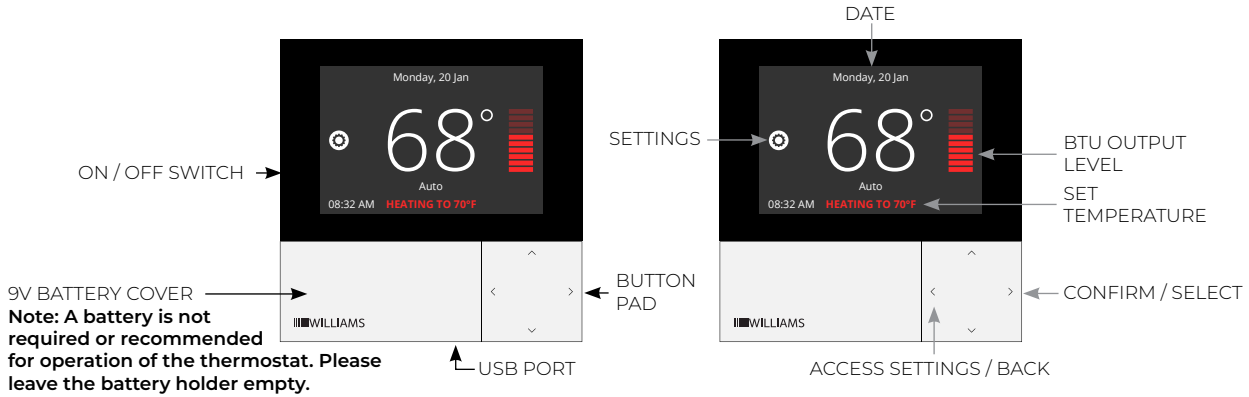




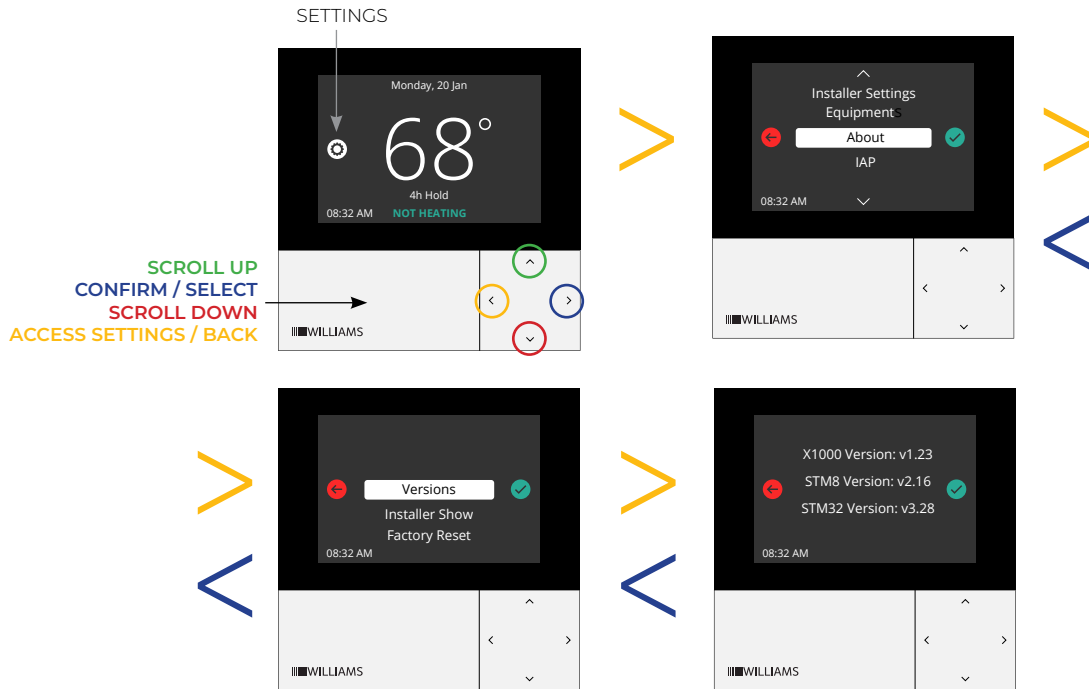
THERMOSTAT SETTING CONTROLS

FOR MODELS:

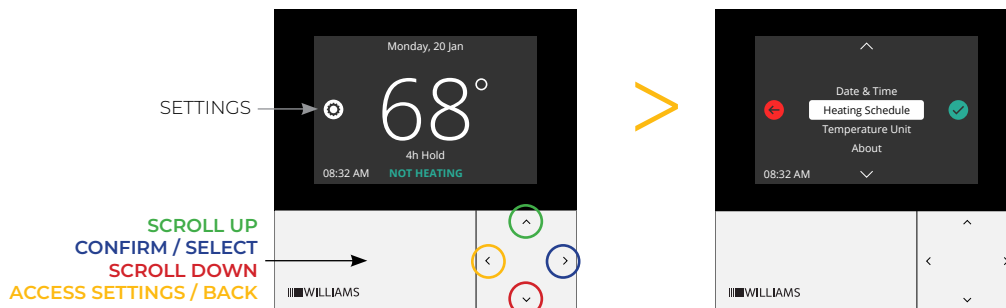
AC2030TN	AC2030TP	AC3040TN	AC3040TP
----------	----------	----------	----------



FIRMWARE VERIFICATION This is the first step after powering the thermostat ON.



SET THE DATE AND TIME by clicking the left arrow to select settings, then use the up and down arrows to high light date & Time. Click the right arrow to select the highlighted item. Follow the menu items to set the month, day, year and time.



THERMOSTAT SETTING CONTROLS

(CONTINUED)

SET UP THE HEATING SCHEDULE Click the right arrow to select the highlighted item. Follow the menu items to set; day, weekend, or all weekdays. Proceed through menu items to set time and temperatures for each day

SETTINGS →

SCROLL UP
CONFIRM / SELECT
SCROLL DOWN
ACCESS SETTINGS / BACK

TO SET FAHRENHEIT OR CELSIUS. Start by clicking the left arrow to select settings, then use the up and down arrows to select Temperature unit. Click the right arrow to select the highlighted item. Select Fahrenheit or Celsius.

SETTINGS →

SCROLL UP
CONFIRM / SELECT
SCROLL DOWN
ACCESS SETTINGS / BACK

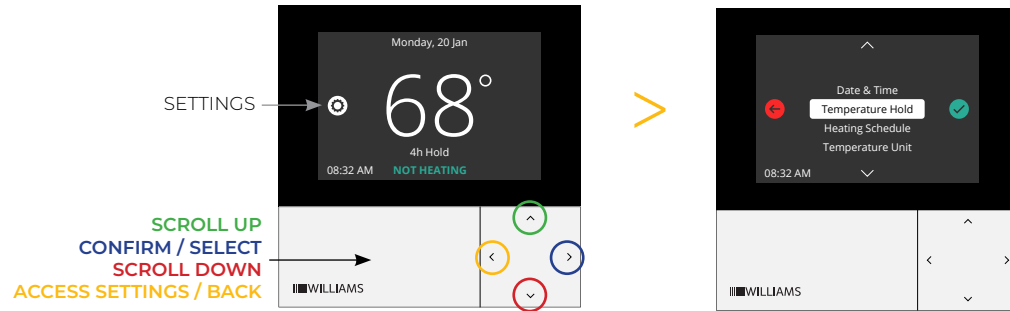
SET THE ROOM TEMPERATURE by clicking the up or down arrows. This will increase or decrease the set temperature. Click the right arrow to confirm. If the thermostat is in auto mode, this will override the programmed schedule for 4 hours.

SETTINGS →

SCROLL UP
CONFIRM / SELECT
SCROLL DOWN
ACCESS SETTINGS / BACK

THERMOSTAT SETTING CONTROLS (CONTINUED)

TO TURN ON HOLD MODE by clicking the left arrow to select settings, then use the up and down arrows to temperature hold. Click the right arrow to select the highlighted item. This will always override the heating schedule and keep the temperature at the main setting.



IF AN ERROR MESSAGE APPEARS follow the instructions on screen. (if the screen is in sleep mode a red LED above the buttons will blink).

