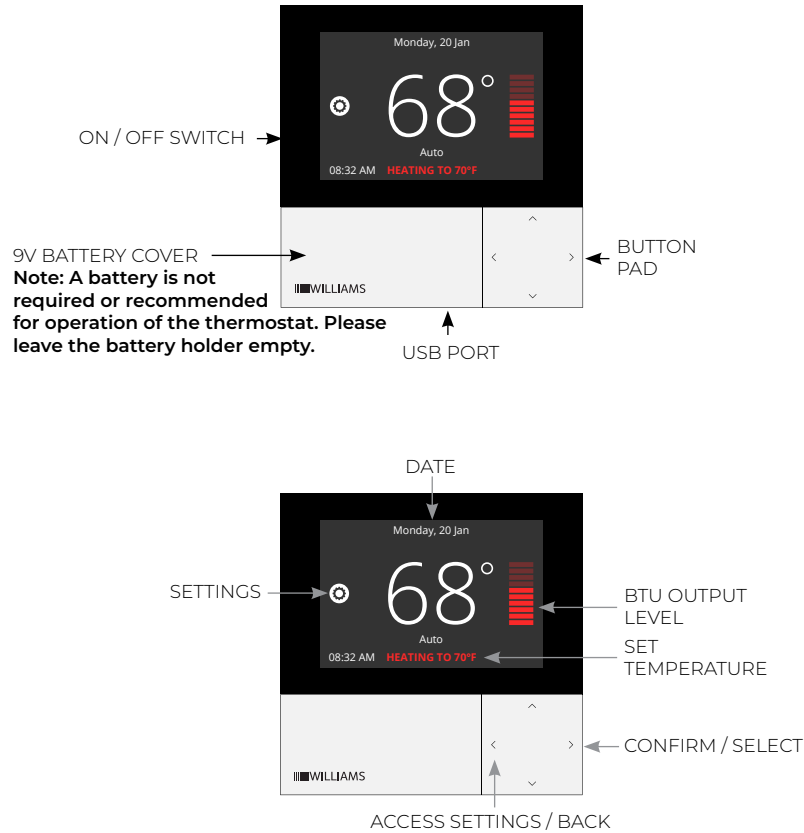




# WILLIAMS FURNACE THERMOSTAT USER INTERFACE UPDATE FOR:

AC2030TN	AC2030TP	AC3040TN	AC3040TP
----------	----------	----------	----------

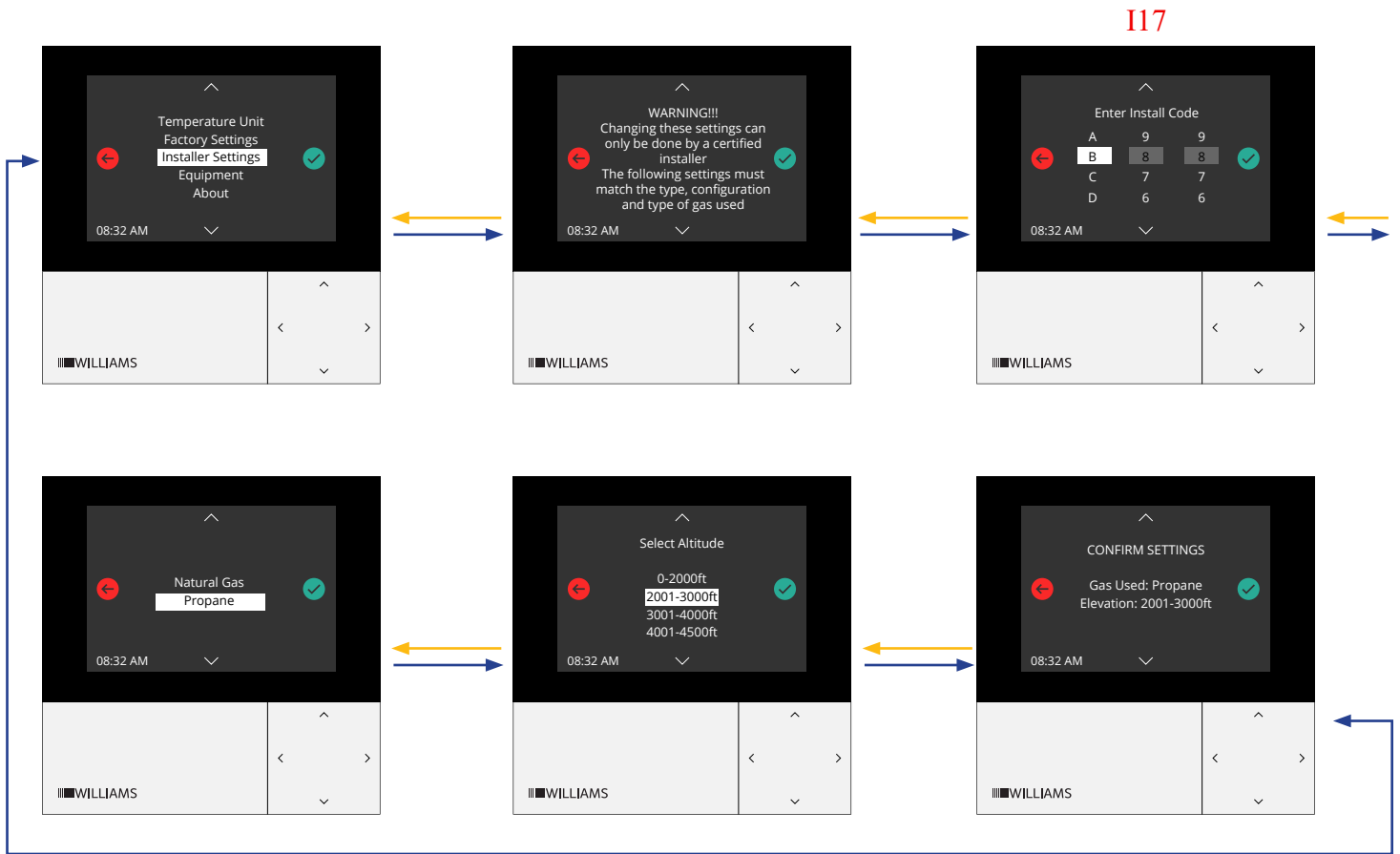
**Combustion Table Selection for MODEL NUMBER, GAS TYPE and ELEVATION  
FOR USE ONLY BY PROFESSIONAL INSTALLERS**



## FURNACE MODEL SETTING CODES

AC2030 SINGLE SIDED AC POWER	AC2030TN / AC3040TN NATURAL GAS	0' - 2,000'
		2,001' - 3,000'
		3,001' - 4,000'
		4,001' - 4,500'
AC3040 DUAL SIDED AC POWER	AC2030TP / AC3040TP PROPANE	0' - 2,000'
		2,001' - 3,000'
		3,001' - 4,000'
		4,001' - 4,500'

# INSTALLER SETTINGS



# EQUIPMENT

